

Beaumont

Beaumont Hospital, Grosse Pointe

468 Cadieux Road
Grosse Pointe, MI 48230
313-473-1000

Medical Office Building

16815 East Jefferson
Grosse Pointe, MI 48230

Valet hours:

Monday - Friday 7:00 am - 8:00 pm
Saturday & Sunday 9:00 am - 5:00 pm

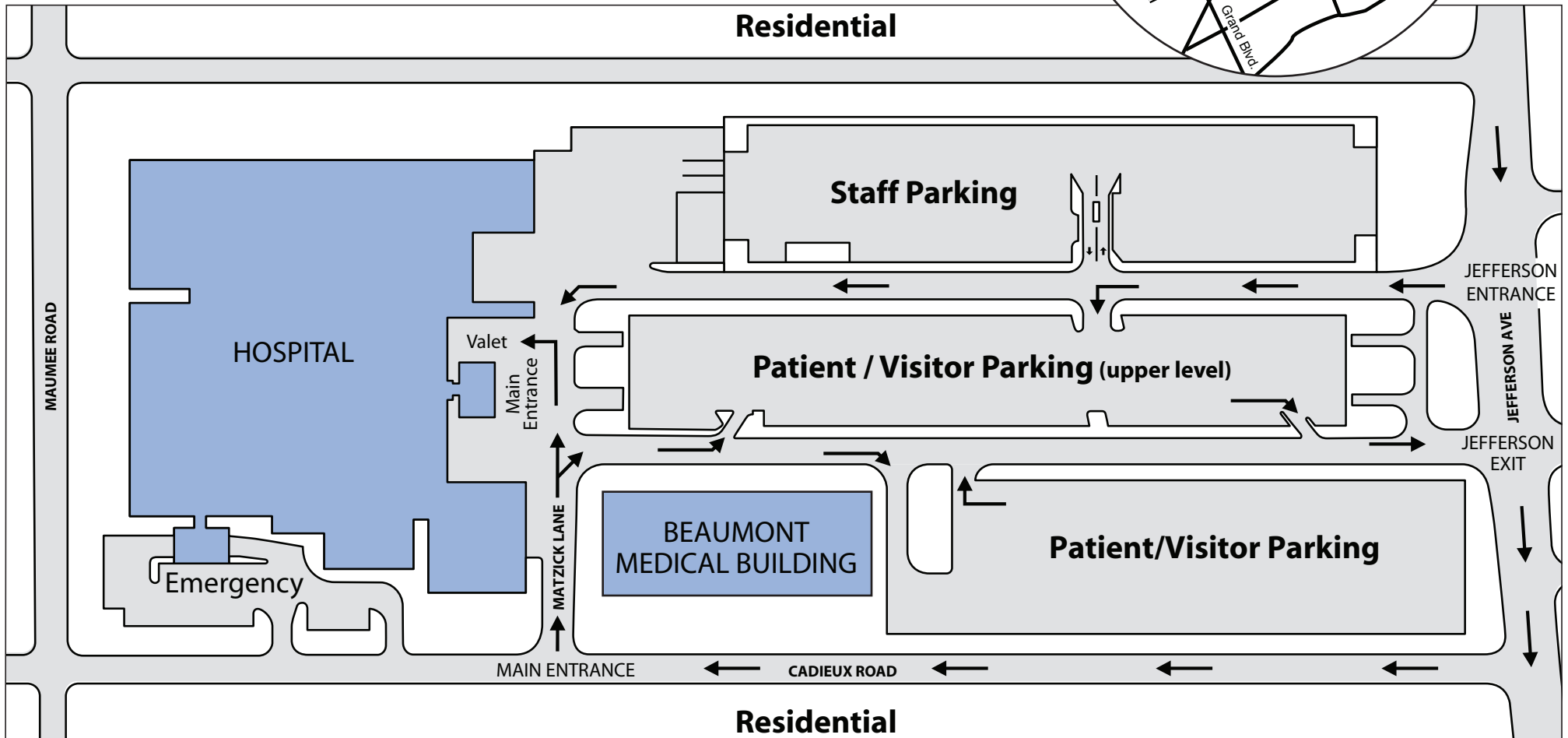
Driving Directions:

From I-94, exit at Cadieux Road, drive south four miles. Enter main entrance off Cadieux from Matzick Lane.

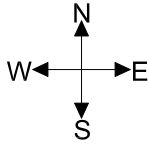
From Jefferson Avenue, turn directly into the Jefferson entrance following visitor and patient parking signage.

From the Tunnel, take I-75 North to I-94 East to Cadieux. Go south on Cadieux Road four miles. Enter main entrance off Cadieux from Matzick Lane.

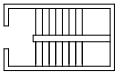
From Metropolitan Airport, take I-94 East to Cadieux. Go south on Cadieux Road for four miles. Enter main entrance off Cadieux from Matzick Lane.



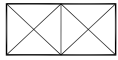
FIRST FLOOR



SYMBOL KEY



Stairs



Public Elevators



Public Corridors



Public Restrooms



ATM Machine

MAJOR DESTINATIONS

Patient Registration Services

Coffee Kiosk

Connelly Auditorium

Emergency Waiting

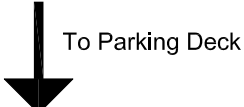
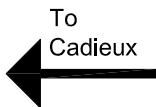
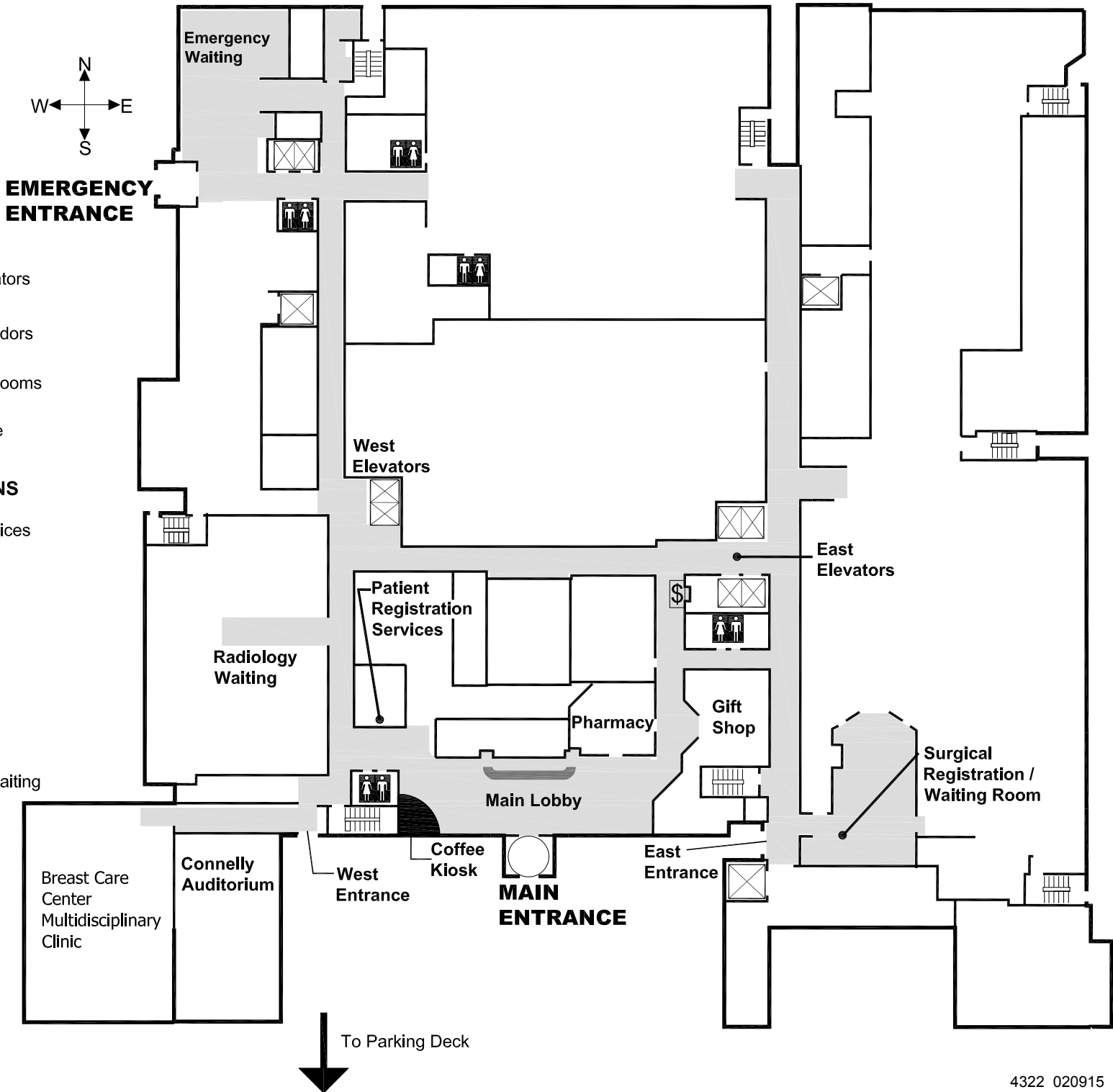
Gift Shop

Human Resources

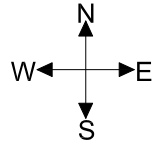
Main Lobby

Radiology Waiting

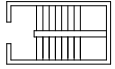
Surgical Registration / Waiting



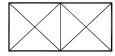
LOWER LEVEL



SYMBOL KEY



Stairs



Public Elevators



Public Corridors



Public Restrooms



ATM Machine

MAJOR DESTINATIONS

Cafe Conference Room (CCR)

Cafeteria

Medical Records

Private Dining Room

